

## ComfortLine LED Drivers – Dimmable

**700 mA / max. 24 W and max. 37 W**

Compact casing shape with integrated cord grip optional for built-in or independent operation.

### Electrical characteristics

Secondary side switching of LED modules is allowed (hot wiring).

Power factor at full load: > 0.9

Standby losses: < 0.5 W

### Dimming

The dimming function is achieved by applying a PWM signal to the nominal current.

Dimming range: 1 to 100%

If no dimming interface is connected, brightness will stay at 100%.

### Connection details

Mains voltage: 220–240 V ±10%

Mains frequency: 50–60 Hz

DC operation: 198–264 V DC, 0 Hz

(can be reduced to 176 V with reduced service life time)

With integrated through-wiring

Push-in terminals: 0.2–1.5 mm<sup>2</sup>

### Safety features

Electronic short-circuit protection

Overload and overtemperature protection

Protection against "no load" operation

Degree of protection: IP20

### Protection class II

#### SELV

Product guarantee: 5 years



### Expected service life time

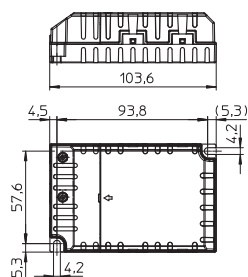
at operation temperatures at  $t_c$  point

Operation current	Ref. No. all types	
all	75 °C	65 °C
hrs.	50,000	100,000

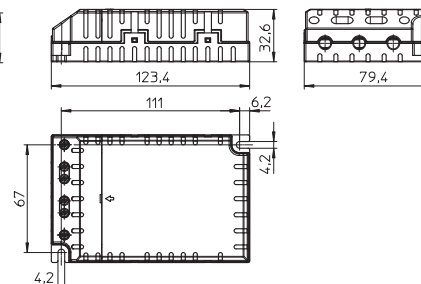


See page 235–242

**K2.1**



**K3.2**



Max. output W	Type	Ref. No.	Mains voltage 0 Hz, 50–60 Hz V	Mains current mA	Current output DC mA	Voltage output DC V	Max. voltage without load DC V	Efficiency at full load % (230 V)	Ambient temperature $t_a$ °C	Casing temperature $t_c$ °C	Weight g
<b>K2.1 – Dimensions: 103.6 x 67.4 x 31 mm</b>											
24	ECXd 700.044	<b>186280</b>	198–264	160–100	700 ±5%	14–34	< 45	> 84	–25 to 50	75	145
			220–240	130–120							
<b>K3.2 – Dimensions: 123.4 x 79.4 x 32.6 mm</b>											
37	ECXd 700.064	<b>186308</b>	198–264	235–155	700 ±5%	30–53	< 60	> 87	–25 to 50	75	190
			220–240	200–180							